



*Report to Appointors*  
*2003 – 2004*

Ngā Kaitiaki Rēti Ngahere Karauna  
CROWN FORESTRY RENTAL TRUST



# *Crown Forestry Rental Trust Trustees*



SIR GRAHAM LATIMER



MS MARYAN STREET



MR GREGORY FORTUIN



MR PAUL MORGAN



MS ANGELA FOULKES



MR KINGI SMILER

*Always step forward with an understanding of*

## *Contents*

- 2 *Report of Trustees – A year of change*
- 6 *Report of Acting Chief Executive*
- 8 *Progress of Claimants*
- 11 *Financial Statements*
- 36 *Map - Forest Rental Proceeds*

## *Claimants perceptions of CFRT & the claims process*

“If we were to function effectively in the community, we had to take a leading role in breaking down that barrier [lack of knowledge in the community] and identifying places to stand up and talk like Federated Farmers and Rotary meetings,” **Richard Bradley, Rangitane o Wairau.**

On deciding to move to direct negotiations: “A key issue was timing – getting the putea in the bank, ... whilst we want to accelerate in terms of what it might have been (if we had gone) through the Tribunal, we don’t want to sign up to the first settlement that’s offered” **Chris Shenton, Ngati Apa.**

*where you are going and why you are going there.*

“We did the initial planning as a team, we have always worked as a team and each of us has had particular roles to play and we have a claims committee which meets regularly and which participates in the forward planning to get the settlement... I did an awful lot of work at the start on the strategic plan for settling the claim and the costing and the perceived tasks that we would have to do and the professionals that we would need. It was a claims committee approach by negotiators, with each one doing different things.”

“We’re reaching for post settlement as a part of getting settlement, but frankly we want to get settled. We’re overdue. We’re running on OD in terms of settlement... We’ve got our beneficiaries out there, saying, ‘What’s happening? Sack the negotiators!’ they’re not quite like that, but they’re all hyped up. In 1999, they came down here to Wellington with the hoop de la and the red wine in Parliament and, ‘hey, we’re off!’ Four years later we’re still trying to get the Deed.” **Maurice Takarangi, Rangitane o Manawatu.**

“Central government should be considering Ngati Awa as a multi-million dollar regional economic entity. Iwi are an important part of regional development and those agencies need to consider this when making funding available.” **Jeremy Gardiner, Ngati Awa.**

# 1: *Report of Trustees – A year of change*

We are pleased to present the annual report of the Crown Forestry Rental Trust to our Appointors – the New Zealand Maori Council, the Federation of Maori Authorities and the Hon. Dr Michael Cullen, Minister of Finance – as required by the Trust Deed (Clause 7.1 [c]). This report covers the accounts and activities of the Crown Forestry Rental Trust for the period of 1 April 2003 to 31 March 2004.

The 2003 – 2004 year has been a turning point for the Trust. It has been a year of change: a time of reflection and resolve, and a time of renewed dedication and hard work.

There has been change in the composition of the Board of Trustees, with the departure of both Professor Whatarangi Winiata and Paul Carpinter.

The Trust is grateful for Professor Winiata's unwavering commitment to the purpose of the Trust in supporting Maori claimants over the past five years. His quiet but firm resolve was a distinguishing feature over his time as a Trustee. Paul Carpinter's clarity of purpose and commitment to the Trust Deed were valuable assets to the Trust. Although his time with us was relatively short, we are appreciative of the uncompromising dedication he brought to the Trust.

As two Trustees departed, we were delighted to welcome the respective appointments of Kingi Smiler and Angela Foulkes. Both Kingi and Angela have brought valuable skills and expertise to the governance board of the Trust.

Also as part of this change, the year saw the departure of our long serving Chief Executive, Karen Waterreus. She has made a considerable contribution to the work of the Trust as it responded to a constantly evolving settlement process. Throughout her tenure, Karen demonstrated a single-minded commitment to the resolution of Treaty claims and challenged all parties in the process to seek durable settlements. As Trustees we thank her for the work that she has undertaken on our behalf during the past 12 years. We wish her well for the future.

In addition to change, the Trust has had closure to its longstanding tax issue. A highly satisfactory result was achieved for the Trust when the Privy Council delivered its judgement that the Crown Forestry Rental Trust is a charitable trust, thus ending our ongoing dispute with the Inland Revenue Department.

The effect of the decision is that the Trust is exempt from paying income tax for the past and in future.

Approximately \$50 million was returned and reinvested according to the Trust Deed and the Trust's investment strategy. This repayment will generate additional interest income, which will be used to assist claimants in the resolution of claims over Crown forest land. Direct assistance to claimant groups will continue to be made within the guidelines of the Trust funding policy and benchmarks.

As Trustees, we are united in our desire to see the resolution of claims over Crown forest licensed land and the return of these assets to their rightful owners.

Unfortunately, the pace of settlement continues to drag. The delays in settling claims involving Crown forest land lead to lost development opportunities for local communities and a lack of certainty for all New Zealand.

Settling Treaty claims is the responsibility of the Crown and Maori – no one else. The Treaty settlement process requires commitment, skills, leadership, organisation and vision. Although the Trust is not a party to this resolution, the resources the Trust provide helps support this complex process. We are committed to fulfilling an important and necessary role in supporting committed and organised claimant groups achieve the settlement of comprehensive claims that include Crown forest land.

As part of this commitment to support Maori, we have continued to improve and strengthen our governance systems with the formal adoption of subcommittees to deal with a demanding workload. The Trust has four committees (Finance and Risk, Communications, Effective Governance, and Human Resources and Change Management). These improvements will better enable the Trust to continue to act as good stewards of assets and provide positive and real assistance to claimant groups.

During the past year the Trust has continued to devote significant time and resources to assisting groups to cluster and work together for the purpose of advancing their claims before the Waitangi Tribunal and, more recently, to assist groups involved in direct negotiations with the Crown.

This work must continue. The Trust is pleased to note the completion of hearings in Te Tau Ihu. The Waitangi Tribunal has also begun hearing claims in the Urewera and Wairarapa districts. We look forward to the expeditious completion of these inquiries.

The Trust has also continued to allocate significant funding to groups preparing for Waitangi Tribunal hearings. The Trust continues to fund approximately 80% of the research for Waitangi Tribunal inquiries. We believe it is important that the Tribunal is adequately supported to produce timely reports following its hearing processes. Delays in receiving Waitangi Tribunal reports have the potential to lead to uncertainty of direction amongst claimants and create difficulty in maintaining internal cohesion.

It is particularly pleasing to note the material progress being made in the Central North Island, with the mandates of Ngati Manawa, Ngati Whare, Ngati Tuwharetoa and Te Arawa being recognised by the Crown. The achievement of this significant milestone has created the pathway for negotiations to proceed to the ultimate resolution of claims to the largest of New Zealand's Crown forest lands.

It is also heartening to note the significant progress made in other areas, such as Turanganui a Kiwa, Wairoa and Ngati Apa. Each of these areas is in the early stages of seeking a mandate to negotiate the settlement of claims involving Crown forest land.

The Trust is confident that the Crown and Maori share our view that the settlement of claims to Crown forest land will provide a significant and necessary boost to Maori economic development. The earlier claims to Crown forest land are settled, the better for the New Zealand economy. The Trust believes that improved communication between all parts of the sector will enable better decision-making and savings in time and resources.

The Trust is currently working with the Waitangi Tribunal and Office of Treaty Settlements on the formulation of a tripartite Memorandum of Understanding. This will lead to greater clarity

“IT HAS BEEN A YEAR OF CHANGE: A TIME  
OF REFLECTION AND RESOLVE, AND A TIME  
OF RENEWED DEDICATION AND HARD WORK.”

in relationships between the Trust and the two agencies responsible for settling Treaty claims over Crown forest land.

Clear and agreed lines of communication and responsibility will allow the Trust to better support claimant groups working with the two key Treaty settlement agencies. This will also allow the Trust to be measured on matters within its jurisdiction, rather than matters outside its control.

The Maori Affairs Select Committee released its report on the operations of the Trust after more than two years of deliberation. While the report was critical of aspects of the Trust's operations, the Committee clearly highlighted the fact that the settlement of Crown forest land claims is outside the control of the Trust and is more properly the responsibility of Maori and the Crown.

Despite this vindication of the Trust's position, the Committee's report has given the Trust cause for reflection and reminded us of the need to constantly evaluate our policies, processes and criteria for relevance in a changing environment.

In the last months of 2003, Trustees directed a thorough review of Trust operations. From this, the Trust began a comprehensive review of its funding policies and criteria. This process will deliver claimants and wider stakeholders the clarity and certainty they demand. It will enable the Trust to demonstrate it has clear and consistent decision-making processes whereby all groups are treated fairly.

Hand in hand with this policy review was a reconsideration of the way the Trust organises itself to deliver its assistance. As Trustees we are constantly mindful of the need to support claimants in the most effective manner possible.

The Trust is very clear that claimants must direct and control their own claims if meaningful progress

is to be made. Lodging a Treaty claim to Crown forest land is a great responsibility that cannot be taken lightly. The Trust takes its responsibilities seriously and expects the same levels of accountability and excellence from claimants that it demands of its own operations.

Looking to the future, the Trust is committed to increasing its accountability to stakeholders through improved communication, delivering certainty to claimants with clearer and more consistent policy, and continuing to provide funding assistance and advice to enable claimants get the job of settlement done. In return, the Trust will expect similar levels of organisation, accountability and commitment to achieving real outcomes from all parts of the Treaty settlement sector.

The Trust is moving decisively into the future, reaffirming its commitment to the Trust Deed's mandate with clarity, accountability and transparency “to assist Maori in the preparation, presentation and negotiation of claims involving Crown forest lands.”

Sir Graham Latimer  
Chairman

Ngā Kaitiaki Rēti Ngahere Karauna  
Crown Forestry Rental Trust

## *About the Trust*

1

The Crown Forestry Rental Trust assists Maori in the preparation, presentation and negotiation of claims involving Crown forest lands.

2

Settling claims is the responsibility of claimants and the Crown. The Trust is committed to facilitating this process.

3

The Trust aims to fund this process efficiently so that claimants and the Crown can settle as soon as possible.

4

Settlements will benefit claimants, communities, forestry companies and others because long term decisions can be made about forest assets and claimants can get on with their post-settlement development.

5

The Trust is independent of the Government. It receives no taxpayer monies.

## 2: *Report of Acting Chief Executive*

**E mihi ana ki te Tangata e tangi ana ki te Whenua. Ratou kua wheturangitia, haere, haere, haere. Tatou te hunga ora tena koutou, tena koutou, tena tatou katoa.**

The Crown Forestry Rental Trust has been the subject of criticism for a number of years. Both Maori and the Crown have been dissatisfied with the pace of the Treaty Settlement process and as a result a focal point for the dissatisfaction was required. Because of the Trust's unique status – a Trust governed by an equal number of Crown and Maori Trustees and responsible for funding a considerable part of the settlement process – CFRT was an easy choice for that role.

This criticism was undeserved but it did offer the Trust an opportunity to re-evaluate its performance.

Last year in August we initiated an internal review into the way we conduct our business. We involved staff, claimants, Treaty sector agencies and a range of other stakeholders. The dominant theme that emerged was that when CFRT “stuck to its knitting” it did this well. Over the past few years we appear to have become involved in a range of activities and roles that are not our core business. We also became involved at times in trying to do the job for the claimants rather than assisting them to do it themselves. This was all driven by a desire to secure a faster settlement process.

For the first six months of the year, we undertook a realignment programme to put the organisation back in its proper role – as a facilitator in the settlement process rather than an active player. CFRT cannot settle claims; only Maori and the Crown can do that. Our core purpose is to assist Maori to prepare, present and negotiate their claims. The best way we can do this is through providing the following services:

- Funding;
- Research planning, contracting and quality control;
- Relationship brokering and;
- Knowledge of the Treaty settlement process.

In order to clarify to all stakeholders what they can expect from CFRT, we prepared a “road map for the settlement process”, which identifies the major milestones and the activities required to achieve those milestones. For those activities that fit within the scope of CFRT, we have developed



a benchmarked pricing model based on the experience of other groups who have completed the process. A manual clearly describing CFRT Policies and Processes has been signed off by the Trustees and information sheets are available to claimants.

With the realignment process, there has been a corresponding down-sizing of the organisation. Primarily, this was achieved through allowing the expiry of fixed term contracts, although a limited number of roles were disestablished. Staff commitment to the settlement process has always been high and it is with genuine regret that we saw these valued people depart the organisation.

I take this opportunity to thank Trust staff – all performed outstandingly this year. The commitment to business while dealing with the change management programme is a credit to their professionalism.

The settlement process is based around the notion of comprehensive settlements. The Crown seeks to settle comprehensively with large natural groups. The Waitangi Tribunal process hears claims on a district wide basis. The CFRT Trust Deed specifies that we work to progress those claims that involve or could involve Crown licensed lands. As no provision currently exists for the negotiation of forestry specific claims, CFRT is forced to accept a considerable part of the burden for paying for the settlement of all claims. This is evident in our business plan for the next five years.

CFRT seeks to offer clearly defined services to the Treaty sector. Our role is to invest in a range of activities that assist claimants to achieve specific settlement outcomes. Claimants rightfully have ownership, control and ultimate responsibility for the successful progression of their claims. We seek to conduct our business in a professional manner. The process of defining and refining who we are and what we do is a natural part of the evolution of any organisation at this point.

I am confident that CFRT is in a strong position to perform its role in facilitating the resolution of Treaty of Waitangi claims over the next few years.

Heoi ano te korero mo tenei wa.

“OUR ROLE IS TO INVEST IN A RANGE OF  
ACTIVITIES THAT ASSIST CLAIMANTS TO  
ACHIEVE SPECIFIC SETTLEMENT OUTCOMES.”



Ben Dalton  
Acting Chief Executive  
Ngā Kaitiaki Rēti Ngahere Karauna  
Crown Forestry Rental Trust

## 3: *Progress of Claimants*

### *Central North Island*

The settlement of the Central North Island (CNI) claims remains a key area of work. A major programme of research, encompassing 14 separate projects across the three CNI Inquiry Districts, is currently underway. It is due for completion by 30 September 2004. Along with the Trust's Land History and Alienation Database, it is expected that this research will significantly assist CNI claimants to establish the necessary evidential base to advance their claims against the Crown.

The Trust is currently working with four iwi that have now had their mandates recognised by the Crown (Ngati Tuwharetoa, Ngati Manawa, Ngati Whare and Te Arawa). The fifth CNI iwi, Ngai Tuhoe, is continuing internal discussion. Until such time as this occurs, the Trust will engage with Ngai Tuhoe in the Urewera Waitangi Tribunal hearing process.

Over the next year, it is expected that mandated CNI iwi will sign their Terms of Negotiations and commence active negotiations with the Crown. The Trust expects these negotiations to be well advanced by March 2005. The first stage of the CNI Research programme will be completed by October 2004.

In July 2005, it is expected that mandated CNI iwi will sign their Terms of Negotiations and commence active negotiations with the Crown.

### *Gisborne*

The Trust supported two groups (Ngai Tamanuhiri and Te Pou A Haokai, who brought together five groups) to complete their Deed of Mandate. These were submitted to the crown in march 2004.

### *Ngati Apa*

Claimants chose to undertake the direct negotiations process because the wait for Waitangi Tribunal hearings was so long and because the bulk of their evidential base was already substantially completed (with CFRT assistance). They recently submitted a Deed of Mandate to the Crown.

### *Ngati Awa*

The Trust supported Ngati Awa through their governance restructuring and ratification process and awaits the passage of the Ngati Awa settlement legislation.

### *Northland*

On 6 June 2003, the Northland team consulted widely in the Northland Hearing Districts to identify the preferred pathway to settlement of each.

The Trust has provided direct assistance to the following groups and hearing districts: Te Rarawa, Ngati Kahu, the Bay of Islands and Hokianga. CFRT is assisting remaining groups to develop the organisational characteristics required by the Trust for direct assistance.

In December 2003, Trust staff met with representatives of claimant collectives for the Bay of Islands, Hokianga, Whangaroa, Whangarei and Mahurangi Inquiry Districts and agreement was reached to commence scoping of research requirements across these districts. District-wide research scoping is currently underway to identify research needs and accommodate both Waitangi Tribunal and Office of Treaty Settlement requirements depending on the path taken by Northland claimants. It is envisaged that a comprehensive plan to complete outstanding research requirements for these districts will be agreed in mid 2004.

Oral and Traditional research training workshops have been held with eight claimant groups in order to identify thematic issues and support a combined thematic/district approach to research with the Trust. The collectives are currently in the process of planning or implementing their approach to research.

### *Te Tau Ihu*

Claimant groups have successfully completed their presentation of evidence at Waitangi Tribunal hearings, in two years rather than the eight year schedule originally proposed. Eight groups came together to pursue a collective approach to Waitangi Tribunal hearings, which were completed at the end of 2003.

The Trust's transparent approach to funding and negotiations resulted in each iwi knowing that resources were equally shared and all had equal standing.

The Trust also supported the preparation of substantial historical reports on behalf of Te Tau Ihu claimants and completed mapping work.

### *Urewera*

The Waitangi Tribunal began hearing Urewera claims in November 2003. Three weeks of hearings have been completed, with a further eight hearings scheduled for 2004 – 2005. The Trust made a major contribution to the Urewera casebook and a number of CFRT commissioned/funded witnesses will be presenting evidence during the course of this Inquiry. The Trust has completed Historical Overview Mapping for this hearing district.

### *Wairarapa ki Tararua*

The Waitangi Tribunal began hearing Wairarapa ki Tararua claims in March 2004 and a further eight hearings have been scheduled during 2004 – 2005. The Trust commissioned a substantial proportion of the historical and technical reports to be presented as part of this inquiry and has completed Historical Overview Mapping for this hearing district.

### *Wairoa*

On 6 June 2003, the Wairoa Working Group (WWG) agreed to explore the opportunity to enter into direct negotiations to resolve their claims against the Crown.

The Trust contracted the WWG to submit a Deed of Mandate to OTS by 31 March 2004. The WWG have requested an additional four months in which to submit their Deed of Mandate.

With Trust assistance, their evidential base will be completed in 2004 – 2005.

### *Whanganui*

The Trust has worked closely with the four Whanganui clusters and commissioned several significant historical reports for the claimant evidential base for presentation during Waitangi Tribunal hearings in July 2005. The Trust will complete its contribution to the Whanganui casebook by the end of 2004.

### *Land History Alienation Database*

Information from the Land History Alienation Database (LHAD) has been available to Central North Island claimants groups since the end of April this year. The LHAD project traces the history of approximately 3 million acres of land in the CNI and will provide data to support the claims of CNI groups. It has involved the capture of over 80,000 events affecting 18,000 blocks of land from data sourced directly by Trust researchers from the Crown records at the Maori Land Court in Rotorua and Whanganui, the LINZ online and physical archives in Hamilton and Wellington, and the National Archive in Wellington.



---

# *Financial Statements*

*For the Year Ended 31 March 2004*

---

12	<i>Statement of Financial Performance</i>
12	<i>Statement of Movement in Capital</i>
13	<i>Statement of Financial Position</i>
14	<i>Statement of Cash Flows</i>
15	<i>Notes to the Financial Statements</i>
34	<i>Forest Rental Proceeds</i>
37	<i>Auditors Report</i>

## Statement of Financial Performance

For the Year Ended 31 March 2004

	Note	Actual 2004 \$	Actual 2003 \$
<b>INCOME</b>			
Interest income		22,502,357	21,294,043
IRD Use of Money Interest		5,294,079	–
Other income		47,998	53,642
<b>Total Income</b>		<b>27,844,433</b>	<b>21,347,686</b>
<i>Less</i>			
<b>Operating expenses</b>			
Administration expenses	7	4,313,197	4,002,553
<b>Assistance to claimants</b>			
Disbursements to claimants	7,14	4,959,494	5,540,296
Research services for claimants	7	4,382,043	4,238,819
Facilitation and formation of claimant groups	7	2,093,599	1,844,403
<b>Total Assistance to Claimants</b>		<b>11,435,136</b>	<b>11,554,460</b>
<b>Total Expenditure</b>		<b>15,748,333</b>	<b>15,626,071</b>
NET OPERATING SURPLUS BEFORE TAXATION		12,096,100	5,721,615
Income tax expense/(Refund)	3	(13,860,790)	1,888,980
<b>NET OPERATING SURPLUS AFTER INCOME TAX</b>		<b>25,956,890</b>	<b>3,832,635</b>

## Statement of Movements in Capital

For the Year Ended 31 March 2004

	Note	2004	2003
<b>FOREST RENTAL PROCEEDS</b>			
Balance at beginning of year		348,934,191	323,698,852
Receipts for the year		24,059,446	26,877,932
Less distributions to confirmed beneficiaries	13	–	(1,642,593)
Balance at end of year		372,993,637	348,934,191
<b>RETAINED EARNINGS</b>			
Balance at beginning of year		27,892,681	24,060,046
Net surplus for the year		25,956,890	3,832,635
Balance at end of year		53,849,571	27,892,681
<b>TOTAL CAPITAL</b>		<b>426,843,208</b>	<b>376,826,872</b>

The attached notes and schedules form part of these financial statements.

# Statement of Financial Position

As at 31 March 2004

	Note	2004 \$	2003 \$
<b>CAPITAL FUNDS</b>			
Forest rental proceeds		372,993,637	348,934,191
Retained earnings		53,849,571	27,892,681
<b>TOTAL CAPITAL</b>		<b>426,843,208</b>	<b>376,826,872</b>
Total Capital is represented by:			
<b>CURRENT ASSETS</b>			
Bank balance	4	55,766	50,553
Short term deposits	4	23,044,864	524,735
Government securities	4	70,381,970	20,053,045
Sundry receivables		12,190	190
Accrued interest		7,725,711	7,189,203
Taxation refund due		50,130,005	30,975,039
Prepayments		–	40,196
		151,350,506	58,832,961
<b>NON CURRENT ASSETS</b>			
Fixed assets	5	1,196,638	1,494,973
Government securities	4	275,692,711	317,672,536
		276,889,349	319,167,509
<b>TOTAL ASSETS</b>		<b>428,239,855</b>	<b>378,000,470</b>
<b>CURRENT LIABILITIES</b>			
Employee payables		230,237	213,607
Other payables		1,166,410	959,991
		1,396,647	1,173,598
<b>NET ASSETS</b>		<b>426,843,208</b>	<b>376,826,872</b>

On behalf of Trustees



Sir Graham Latimer  
Chairman  
Dated: 18 May 2004



Gregory Fortuin  
Trustee  
Dated: 18 May 2004

The attached notes and schedules form part of these financial statements.

# Statement of Cash Flows

For the Year Ended 31 March 2004

	Note	2004 \$	2003 \$
<b>CASH FLOWS FROM/(USED IN) OPERATING ACTIVITIES</b>			
Cash was provided from:			
Interest on investments		25,715,999	23,970,518
Other income		47,403	68,115
		<b>25,763,402</b>	<b>24,038,633</b>
Cash was applied to:			
Payment of administration expenses and services to claimants		9,882,273	10,063,084
Disbursements to claimants		4,959,494	5,254,704
Taxation payments		97	6,855,380
		<b>14,841,864</b>	<b>22,173,168</b>
<b>NET CASH IN/(OUT) FLOWS FROM OPERATING ACTIVITIES</b>	<b>6</b>	<b>10,921,538</b>	<b>1,865,465</b>
<b>CASH FLOWS FROM/(USED IN) INVESTING ACTIVITIES</b>			
Cash was provided from:			
Proceeds from investment maturities		20,013,265	21,771,209
Proceeds from sale of fixed assets		1,000	2,362
		<b>20,014,265</b>	<b>21,773,571</b>
Cash was applied to:			
Purchase of fixed assets		357,389	322,581
Purchase of investments		32,112,517	50,119,457
		<b>32,469,906</b>	<b>50,442,038</b>
<b>NET CASH IN/(OUT) FLOWS FROM INVESTING ACTIVITIES</b>		<b>(12,455,641)</b>	<b>(28,668,467)</b>
<b>CASH FLOWS FROM/(USED IN) FINANCING ACTIVITIES</b>			
Cash was provided from:			
Rental proceeds received		24,059,446	26,877,932
Cash was applied to:			
Repayment of rental proceeds – Claimants		–	1,642,593
<b>NET CASH IN/(OUT) FLOWS FROM FINANCING ACTIVITIES</b>		<b>24,059,446</b>	<b>25,235,339</b>
<b>NET INCREASE/(DECREASE) IN CASH HELD</b>		<b>22,525,342</b>	<b>(1,567,663)</b>
Cash at beginning of the year		575,288	2,142,951
<b>CASH AT END OF THE YEAR</b>		<b>23,100,630</b>	<b>575,288</b>
Composition of cash:			
Bank balances		55,766	50,553
Short-term deposits		23,044,864	524,735
		<b>23,100,630</b>	<b>575,288</b>

The attached notes and schedules form part of these financial statements.



# Notes to the Financial Statements

For the Year Ended 31 March 2004

## 1. Statement of Accounting Policies

These financial statements are presented for the reporting entity Crown Forestry Rental Trust.

The financial statements have been prepared in accordance with the Trust Deed 1990 and the Financial Reporting Act 1993. The financial statements have been prepared on the basis of historical cost with the exception of certain items for which specific accounting policies are identified.

### (i) Investments

Investments include government securities and short-term deposits with registered banks. Interest bearing securities of the New Zealand Government are recorded at cost adjusted for the amortisation of any premium or discount using the yield to maturity method.

### (ii) Recognition of income

Interest income is recognised on an accrual basis. The premiums or discounts arising on the purchase of New Zealand Government interest-bearing securities are amortised using the yield to maturity method and are recorded as interest income.

All financial arrangements entered into by the Trust are recognised in the financial statements at their carrying value.

### (iii) Financial instruments and various risks

#### (a) Foreign exchange risk

The Trust has no exposure to foreign exchange risk. All payments on behalf of claimants are made in New Zealand currency.

#### (b) Credit risk

Financial instruments, which are potentially subject to credit risk, consist primarily of short-term deposits and government securities. The Trust may be subject to losses up to the value of these instruments in the event of non-performance by counter-parties, however it does not expect losses to occur as most of these instruments are comprised of sovereign debt, the balance being held with registered banks. Consequently no collateral is held by the Trust to support these financial instruments.

#### (c) Interest rate risk

The Trust has not recorded any unrealised gains or losses on government securities, as the intention is to hold them to maturity. The Trust's primary interest rate risk is on government securities and can be measured as the differential between yield to maturity and the current market interest rate.

### (iv) Fixed assets

All fixed assets are recorded at historical cost. Assets have been depreciated on a basis to spread the cost over their estimated useful life. Depreciation of fixed assets is calculated on the following rates:

Computer equipment	25.0% – 39.6% DV & 18.0% – 36.0% SL
Furniture and fittings	15.0% – 33.0% DV & 24.0 % SL
Leasehold improvements	25.0% – 33.0% DV & 6.5% – 25.0% SL
Office equipment	25.0% DV & 8.0% – 40.0 % SL
Other equipment	12.5% – 25.0% DV & 6.5% – 40.0 % SL

*Continued next page*

*These notes are to be read in conjunction with the financial statements.*

# *Notes to the Financial Statements*

## *For the Year Ended 31 March 2004*

### *(v) Receivables*

Receivables are valued at anticipated realisable value. The cash method of accounting is used to record the rental proceeds from licensed Crown forest land. These proceeds are treated as a capital item in the Trust's financial statements in accordance with the Trust Deed.

### *(vi) Income tax*

During the 31 March 2004 the Trust was successful in its case before the Privy Council to have it deemed a Charitable Trust for tax purposes. As a result the Trust is not liable for income tax on its earnings. For the 31 March 2003 year the Trust accounted for income tax using the liability method on a partial basis.

### *(vii) Goods and services tax*

These financial statements have been prepared on a GST exclusive basis to the extent that GST is payable or recoverable from the Inland Revenue Department. The majority of the Trust's income does not meet the requirements of a taxable supply in the terms of the Goods and Services Tax Act 1985.

### *(viii) Changes in accounting policies*

With the exception of the change in accounting policy for income tax following the Privy Council hearing referred to in Note 1 (vi) and Note 3 there have been no changes in accounting policies. All policies other than income tax have been applied on a basis consistent with those used on the prior years.

## *2. Nature of Activities*

The Crown Forestry Rental Trust was established on 30 April 1990 to receive rental proceeds from the Crown forestry licenses.

The rental proceeds received by the Trust are treated as capital in accordance with the Trust Deed and must be invested in either New Zealand Government-issued securities or in short-term interest-bearing deposit accounts with registered banks.

The interest earned from investments is accumulated by the Trust and applied against the administration expenses of the Trust and to assist any claimant in the preparation, presentation and negotiation of claims before the Waitangi Tribunal which involve, or could involve, licensed Crown forest land.

The rental proceeds of the Trust are distributed when the beneficiaries are confirmed and the settlement is enacted.

## *3. Income Tax*

On 28 February 2004 the Privy Council found in favour of the Trust in its long-standing dispute with the Inland Revenue Department. The Privy Council ruled the Trust is a charity and as such exempt from making taxation payments, reversing a 1996 IRD ruling.

The negative taxation expense showing in the Statement of Financial Performance is the result of a full refund due of prior year tax provided. As some of the tax refund and the use of money interest was outstanding at the time these accounts were completed, Trustees best estimates of the amounts due were used.

Court costs were also awarded to the Trust and are yet to be quantified. As such these cost recoveries have not been accounted for in the financial statements, as even an estimated recovery amount cannot be confirmed at the time of completion of these accounts.

*Continued next page*

*These notes are to be read in conjunction with the financial statements.*

# Notes to the Financial Statements

For the Year Ended 31 March 2004

## 4. Financial Instruments

### Fair values

Estimated fair values of the Trust's financial instruments, excluding accrued interest, as at 31 March are as follows:

The fair value of the financial instruments has been determined using quoted market prices.

	Carrying Amount 2004 \$	Estimated Fair Value 2004 \$	Carrying Amount 2003 \$	Estimated Fair Value 2003 \$
Cash and Bank	55,766	55,766	50,553	50,553
Short-term deposits	23,044,864	23,044,864	524,735	524,735
Government Securities	346,074,683	365,369,936	337,725,581	345,081,526
	<b>369,175,313</b>	<b>388,470,566</b>	<b>338,300,869</b>	<b>345,656,814</b>

### (A) CURRENT

Maturity	Yield %	Face Value 2004 \$	Carrying Amount 2004 \$	Carrying Amount 2003 \$
Short-term deposits at Call	5.25	3,044,603	3,044,603	524,735
Short-term deposits maturing 10/5/04	5.57	20,000,261	20,000,261	–
		<b>23,044,864</b>	<b>23,044,864</b>	<b>524,735</b>
Government Securities				
15.04.03	5.45	–	–	20,053,045
15.04.04	5.17	70,000,000	70,381,970	–
<b>TOTAL CURRENT</b>		<b>70,000,000</b>	<b>70,381,970</b>	<b>20,053,045</b>

Continued next page

These notes are to be read in conjunction with the financial statements.

# Notes to the Financial Statements

For the Year Ended 31 March 2004

## (B) NON-CURRENT

Maturity	Yield	Face Value	Carrying Amount	Carrying Amount
	%	2004	2004	2003
		\$	\$	\$
Government securities				
15.04.04	5.17	–	–	71,109,013
15.02.05	5.33	25,000,000	25,129,361	25,251,422
15.02.06	5.33	25,000,000	25,441,496	25,776,432
15.11.06	5.37	142,500,000	149,630,842	119,998,415
15.07.09	5.60	40,600,000	41,603,087	41,752,204
15.11.11	5.71	35,000,000	33,887,925	33,785,050
<b>TOTAL NON-CURRENT</b>		<b>268,100,000</b>	<b>275,692,711</b>	<b>317,672,536</b>

	2004	2004	2003
	Actual	Budget	Actual
Average monthly return on investments	6.22%	6.12%	6.12%

The fair value of the financial instruments has been determined using quoted market prices.

*Continued next page*

*These notes are to be read in conjunction with the financial statements.*

# Notes to the Financial Statements

## For the Year Ended 31 March 2004

### 5. Fixed Assets

2004	Cost \$	Accumulated Depreciation \$	Net Book Value \$	Current Yr Depn \$
Computer Equipment	3,530,109	2,983,074	547,035	576,637
Furniture & Fittings	429,257	257,189	172,068	31,408
Leasehold improvements	573,021	209,019	364,002	38,451
Office Equipment	312,304	201,911	110,393	8,228
Other Equipment	22,938	19,798	3,140	598
	4,842,438	3,645,800	1,196,638	655,322

2003	Cost \$	Accumulated Depreciation \$	Net Book Value \$	Current Yr Depn \$
Computer Equipment	3,262,738	2,406,437	856,301	589,576
Furniture & Fittings	426,673	225,781	200,892	33,552
Leasehold improvements	542,296	170,568	371,728	45,687
Office Equipment	255,997	193,683	62,314	16,485
Other Equipment	22,938	19,200	3,738	622
	4,593,401	3,098,428	1,494,973	685,922

### 6. Reconciliation of Statement or Cash Flows with Operating Surplus

	2004 \$	2003 \$
<b>NET OPERATING SURPLUS FOR THE YEAR</b>	25,956,890	3,832,634
<b>ITEMS NOT INVOLVING CASH FLOWS</b>		
Depreciation expense	655,322	685,922
Amortisation of premium (discount paid) on government securities	3,750,150	3,097,006
<b>IMPACT OF CHANGES IN WORKING CAPITAL ITEMS</b>		
(Increase)/decrease in accrued interest	(536,508)	(419,642)
(Decrease)/increase in accounts payable	223,048	(339,165)
Decrease/(increase) in prepayments & Sundry receivables	28,196	(24,521)
Decrease/(increase) in taxation payable	(19,154,966)	(4,966,400)
<b>ITEMS CLASSIFIED AS INVESTING ACTIVITIES</b>		
Gain on sale of Fixed Assets	(595)	(369)
<b>Net cash flow from operating activities</b>	<b>10,921,538</b>	<b>1,865,465</b>

Continued next page

These notes are to be read in conjunction with the financial statements.

# Notes to the Financial Statements

## For the Year Ended 31 March 2004

### 7. Other Statement of Financial Performance Disclosures

Incorporated within the expenditure of the Statement of Financial Performance.

	Actual 2004 \$	Actual 2003 \$
<b>Administration Expenses:</b>		
Personnel	1,314,718	1,491,929
Rent	333,655	319,417
Depreciation	655,322	686,811
Legal Costs, Tax Case (Privy Council)	313,888	312,170
Other Legal Costs	106,636	123,880
Trustee Fees	112,684	144,600
Trustee Travel Costs	104,575	181,527
Information Technology Services	429,806	316,607
Insurances	79,088	51,862
Strategic Review 2004	166,125	–
Communications	184,195	190,323
Strategic/Business Planning/Policy	327,711	159,495
Audit Fees	34,702	41,882
Fees to auditor & related entities for non-audit services	27,799	16,692
Other Administration costs	721,056	581,965
Overheads allocated to Claimant Services	(602,439)	(616,607)
<b>Total Administration Expenses</b>	<b>4,313,197</b>	<b>4,002,553</b>
<b>Disbursements to Claimants:</b>		
Waitangi Tribunal hearings	1,943,900	2,940,296
Direct Negotiations with the Crown	3,015,594	2,600,000
<b>Total Disbursements to Claimants</b>	<b>4,959,494</b>	<b>5,540,296</b>
<b>Research Services for Claimants:</b>		
Personnel Costs	1,325,549	1,209,560
Research & Mapping contracts	1,664,666	1,376,895
Land Historic Alienation Database	612,115	788,432
Other Research Costs	779,713	863,932
<b>Total Research Services</b>	<b>4,382,043</b>	<b>4,238,819</b>

*Continued next page*

*These notes are to be read in conjunction with the financial statements.*

# Notes to the Financial Statements

For the Year Ended 31 March 2004

	Actual 2004 \$	Actual 2003 \$
<b>Facilitation, Formation Claimant Groups:</b>		
Personnel Costs	553,764	389,094
Regional costs for Central North Island:		
Consultancy	221,561	200,449
Project Management	174,771	–
Legal Costs	187,717	–
Travel & Accommodation	146,241	24,157
Other costs	93,910	17,328
<b>Total Central North Island</b>	<b>824,200</b>	<b>241,934</b>
Regional costs for Northland:		
Travel & Accommodation	81,141	69,731
Motor Vehicle Lease	42,918	42,900
Consultancy & Legal advice	51,199	8,808
Other costs	80,874	238,012
<b>Total Northland</b>	<b>256,132</b>	<b>359,451</b>
<b>Other Districts:</b>	<b>459,503</b>	<b>853,924</b>
<b>Total Facilitation</b>	<b>2,093,599</b>	<b>1,844,403</b>
<b>Total Assistance to Claimants</b>	<b>11,435,136</b>	<b>11,554,460</b>
Made up of:		
Direct Assistance to Claimants	4,959,494	5,540,296
District Research costs	1,912,707	1,705,051
District Facilitation costs	1,407,710	878,774
Sub Total per Note 14	<b>8,279,911</b>	<b>8,123,547</b>
Plus non-district specific Research costs	2,469,336	2,533,768
Plus non-district specific Facilitation costs	685,889	897,145
<b>Total Assistance to Claimants</b>	<b>11,435,136</b>	<b>11,554,460</b>

*Continued next page*

*These notes are to be read in conjunction with the financial statements.*

# Notes to the Financial Statements

For the Year Ended 31 March 2004

8. Trustee Fees	Actual 2004 \$	Actual 2003 \$
Trusteeship/Governance	117,534	105,800
Services to claimants	(5,900)	38,800
	<b>112,684</b>	<b>144,600</b>

From 1 July 2003 the rates for Trustee fees have been altered in accordance with the Government's standard "Fees Framework for Members of Statutory and Other Bodies Appointed by the Crown".

The Minister of Finance has set the rates to be a daily rate of \$600 for the Chairperson capped to an annual maximum of \$25,000. Other Trustees have been set a daily rate of \$450, capped to an annual maximum of \$12,500.

The Trustees attend regular meetings during the year to deal with governance issues of the Trust, such as strategic and business planning issues, as well as considering proposals relating to the assistance programmes for claimant groups. In addition, the Trustees spend time working alongside claimant groups to assist them with their affairs as well as working on projects and initiatives at district and national levels.

Fees received by individual Trustees are as follows:

	Actual 2004 \$	Actual 2003 \$
Sir Graham Latimer	58,250	152,400
Ms Maryan Street	9,100	10,600
Mr Rick Bettle	–	(3,000)
Mr Paul Carpinter	3,425	9,600
Mr Lou Tangaere	800	5,800
Professor Whatarangi Winiata	–	(45,200)
Mr Gregory Fortuin	12,500	8,600
Mr Hemi Rua Rapata	4,400	5,800
Mr Paul Morgan	11,234	–
Mr Kingi Smiler	4,650	–
Ms Angela Foulkes	8,325	–
	<b>112,684</b>	<b>144,600</b>

*Continued next page*

*These notes are to be read in conjunction with the financial statements.*



# Notes to the Financial Statements

## For the Year Ended 31 March 2004

### 9. Contingent Liabilities

There were no contingent liabilities at 31 March 2004.

### 10. Contingent Assets

Land Information New Zealand (LINZ) manages the collection of licence fees on behalf of the Crown for the Trust. Every three years the licence fees are reviewed and the licensees are able to dispute the Crown's assessments. As a consequence LINZ holds the disputed portion of the licence fees until the dispute is resolved. As at 31 March 2004 the disputed licence fees held by LINZ amounted to \$19.4 million and interest earned on these balances amounted to \$1.8 million (At 31 March 2003 was \$15.7m with interest \$0.8m).

When disputes are resolved LINZ forwards to the Trust the balance of the licence fees and any interest earned on the balances found in favour of the Crown. The Trust is unable to estimate the final outcome of the licence fee disputes and therefore unable to quantify the probable financial effect on these financial statements.

### 11. Commitments

#### (i) Assistance to claimants

The Trust has commitments of \$1,829,202 as at 31 March 2004 (\$1,592,649 at 31 March 2003) relating to assistance to claimants which has been approved by Trustees at balance date. The releasing of these approvals is subject to the claimant groups meeting the various terms and conditions of funding and the completion of research contracts in progress.

#### (ii) Capital Commitments

The Trust has capital commitments of \$24,031 relating to the upgrade of their financial management system. At 31 March 2003 total capital commitments totalled \$20,097 relating to the development of the Trust's Intranet system.

#### (iii) Lease rental commitments

Future operating lease rentals of premises are not recognised in the financial statements. The minimum lease rental commitments at balance date are as follows:

	2004 \$	2003 \$
Less than one year	317,132	348,394
One to two years	346,056	360,933
Three to five years	259,543	605,599
Total	922,731	1,314,926

*Continued next page*

*These notes are to be read in conjunction with the financial statements.*

# *Notes to the Financial Statements*

## *For the Year Ended 31 March 2004*

### *12. Related Party Transactions*

A number of Trustees have affiliations to certain tribal groups that are represented by claimant groups recognised by the Trust. Where Trustees are considering providing assistance to particular claimant groups to which the Trustees are affiliated, the Trustees have declared and minuted these affiliations and have taken action they consider appropriate to deal with any potential conflict of interest that may arise during the year ended 31 March 2004.

Professor Whatarangi Winiata was a member of the VIP Taumata. The VIP group received \$1,111,373 of direct funding from the Trust during the year to 31 March 2004 (\$2,600,000 for the year to 31 March 2003).

Mr Gregory Fortuin, a Trustee, is a Director of New Zealand Post. During the year to 31 March 2004, the Trust spent \$21,913 on postage with New Zealand Post (\$23,062 during the year to 31 March 2003).

Sir Graham is named as a 14% shareholder on behalf of the Ngatikahu Tribe of Muriwhenua Negotiations Management Committee Ltd. The Trust paid \$13,500 to the Muriwhenua Negotiations Management Committee Ltd during the year to 31 March 2004 for financial assistance towards a project detailing the Wai 45 claim (\$36,080 during the year to 31 March 2003). The project followed the same milestone reporting process as all other projects funded by the Trust.

Mr Paul Morgan is a member of the Committee of Management of Wakatu Inc, a Maori Incorporation who received \$52,500 during the year to 31 March 2004 for financial assistance to present their evidence in the Northern South Island Inquiry. The project followed the same milestone reporting process as all other projects funded by the Trust.

### *13. Distributions to Confirmed Beneficiaries*

No rental distributions were made during the year to 31 March 2004.

During the year to 31 March 2003 there were rental distributions made to Te Uri o Hau of \$1,642,593.15 being settlements of the Pouto Forest in full and 44.98% of the Mangawhai Forest.

*Continued next page*

*These notes are to be read in conjunction with the financial statements.*

# Notes to the Financial Statements

## For the Year Ended 31 March 2004

### 14. Total Disbursements to Claimants to 31 March 2004

Total Disbursements Since 1990		2004	2003	2002
<b>Muriwhenua</b>				
399,580	Muriwhenua Negotiations Management Committee	13,500	36,080	25,000
75,000	Ngati Kuri Trust Board	–	–	75,000
120,000	Te Aupouri Negotiations Co	–	45,000	75,000
1,691,836	Te Runanga o Muriwhenua	–	–	–
105,000	Te Runanga o Te Rarawa	60,000	45,000	–
<b>2,391,416</b>	<b>Total Direct Assistance</b>	<b>73,500</b>	<b>126,080</b>	<b>175,000</b>
<b>Bay of Islands/Hokianga/Whangarei</b>				
50,000	Hokianga Claims Alliance	15,000	35,000	–
68,000	Ngati Hine Health Trust Board	33,000	35,000	–
52,711	Ngati Wai Maori Trust Board	–	–	–
50,000	Pu Hao Rangī (on behalf of a national claim)	–	25,000	25,000
50,000	Puhipuhi Maruata Forestry Claim	15,000	35,000	–
22,500	Te Runanga a Iwi o Ngati Kahu	22,500	–	–
574,834	Te Taumata o Tangitu	–	–	–
53,200	Te Waimate-Taiamai Alliance	18,000	35,200	–
50,000	Whangarei Claimant Collective	15,000	35,000	–
<b>971,245</b>	<b>Total Direct Assistance</b>	<b>118,500</b>	<b>200,200</b>	<b>25,000</b>
<b>Kaipara (Stage I)</b>				
950,260	Otamatea Maori Trust Board	–	–	–
1,074,330	Te Uri o Hau o Te Wahapu o Kaipara	–	–	–
857,210	TUOH Limited	–	–	–
<b>2,881,800</b>	<b>Total Direct Assistance</b>	<b>–</b>	<b>–</b>	<b>–</b>

*Continued next page*

*These notes are to be read in conjunction with the financial statements*

# Notes to the Financial Statements

For the Year Ended 31 March 2004

Total Disbursements Since 1990		2004	2003	2002
<b>Kaipara (Stage 2)</b>				
80,300	Awaroa Claims Management Committee	–	–	–
36	Awaroa ki Manuka	–	–	–
177,085	Kaipara Cooperative Claimant Forum	–	–	–
124,510	Kawerau a Maki Trust	–	–	–
135,995	Manukau Whanau	–	–	–
225,680	Ngati Tahinga/Ngati Mauku	–	–	–
713,549	Ngati Whatua o Kaipara ki Te Tonga	–	–	–
140,000	Te Runanga o Ngati Whatua	–	40,000	80,000
252,012	Te Tao U	–	–	–
<b>1,849,167</b>	<b>Total Direct Assistance</b>	<b>–</b>	<b>40,000</b>	<b>80,000</b>
<b>Kaipara (Stage 3)</b>				
409,023	Nga Hapu o Whangarei Claims Committee	–	–	–
26,048	Nga Hapu o Nga Puhi o Whangarei	–	–	–
204,108	Ngatikahu o Torongare Te Parawhau Hapu	–	–	–
5,000	Te Uri o Tautohe	–	–	–
247,071	Te Waiariki-Ngati Korora Hapu	–	–	–
<b>891,250</b>	<b>Total Direct Assistance</b>	<b>–</b>	<b>–</b>	<b>–</b>
	Northland District Research costs	39,227	10,910	96,002
	Northland District Facilitation costs	256,259	359,451	19,559
	<b>Total Northland Claimant costs</b>	<b>487,486</b>	<b>736,641</b>	<b>395,561</b>
<b>South Auckland</b>				
316,736	Ngaati Te Ata Incorporated	–	–	22,260
<b>316,736</b>	<b>Total Direct Assistance</b>	<b>–</b>	<b>–</b>	<b>22,260</b>
	District Research costs	–	–	30,000
	<b>Total South Auckland Claimant costs</b>	<b>–</b>	<b>–</b>	<b>52,260</b>
<b>Tainui</b>				
202,281	Tainui Maori Trust Board	–	–	–
113,402	Wi Taka Whanau o Ngati Koheriki	–	–	–
<b>315,683</b>	<b>Total Direct Assistance</b>	<b>–</b>	<b>–</b>	<b>–</b>

Continued next page

These notes are to be read in conjunction with the financial statements.

# Notes to the Financial Statements

For the Year Ended 31 March 2004

Total Disbursements Since 1990		2004	2003	2002
<b>Hauraki</b>				
280,635	Gregory-Mare Whanau	–	–	20,100
72,130	Hakipene Hura Whanau	–	–	15,000
1,840,535	Hauraki Maori Trust Board	–	–	110,000
528,000	Marutuahu Confederation	–	265,000	263,000
144,197	Ngati Hei	–	–	–
4,899	Ngati Koheriki	–	4,899	–
101,058	Ngati Koi Claimant Committee	–	–	19,758
20,900	Ngati Maru Iwi Authority	–	–	–
12,048	Ngati Paoa	–	12,048	–
37,210	Ngati Pukenga	–	–	–
3,963	Ngai Tai ki Tamaki	–	3,963	–
2,863	Nga Uri o Horowhenua	–	2,863	–
179,999	Ngati Whanaunga	–	10,000	40,000
130,000	Taipari Whanau	–	–	–
75,717	Te Kupenga o Ngati Hako	–	–	–
152,500	Te Rakahurumai Claims Committee	–	–	–
53,240	Te Rangatira o Tamatera	–	–	–
327,317	Ngati Pu	–	–	–
272,877	Te Whanau o Hamiora Mangakahia	–	–	–
<b>4,240,088</b>	<b>Total Direct Assistance</b>	<b>–</b>	<b>298,773</b>	<b>467,858</b>
	District Research Costs	–	89,504	162,384
	District Facilitation Costs	5,851	143,527	24,119
	<b>Total Hauraki Claimant costs</b>	<b>5,851</b>	<b>531,804</b>	<b>654,384</b>
<b>Tauranga</b>				
545,659	Athenree Lands ki Tauranga Moana	–	–	–
721,349	Pirirakau/Ngati Ranginui	–	–	–
1,537,668	Te Kahui Raupatu o Tauranga Tangata	–	–	537,167
<b>2,804,676</b>	<b>Total Direct Assistance</b>	<b>–</b>	<b>–</b>	<b>537,167</b>
	District Research Costs	–	16,470	136,900
	District Facilitation Costs	2,449	2,316	7,906
	<b>Total Tauranga Claimant costs</b>	<b>2,449</b>	<b>18,786</b>	<b>681,973</b>

*Continued next page*

*These notes are to be read in conjunction with the financial statements.*

# Notes to the Financial Statements

For the Year Ended 31 March 2004

Total Disbursements Since 1990		2004	2003	2002
<b>Ngati Awa/Eastern Bay of Plenty</b>				
100,000	Ngati Awa Maori Trust Board	100,000	–	–
1,091,091	Ngati Makino Claims Committee	–	–	–
179,184	Ngati Pikiāo Forest Claims Committee	–	–	–
2,075,568	Te Runanga o Ngati Awa	–	–	–
1,135,720	Te Runanga o Tuwharetoa ki Kawerau	38,000	28,500	39,500
<b>4,581,563</b>	<b>Total Direct Assistance</b>	<b>138,000</b>	<b>28,500</b>	<b>39,500</b>
<b>King Country</b>				
331,357	Maniapoto Maori Trust Board	–	–	–
186,604	Raukawa Kaumatua Kaunihera	–	–	–
50,625	Te Maru o Rereahu Trust	–	–	50,625
23,625	Te Nehenehenui Claims	–	–	23,625
24,750	Te Kohinga Whanui Claims Collective	–	2,700	22,050
66,200	Tuhua Hikurangi Claimant	–	11,033	55,167
<b>683,161</b>	<b>Total Direct Assistance</b>	<b>–</b>	<b>13,733</b>	<b>151,467</b>
	District Research Costs	–	1,922	18,111
	District Facilitation Costs	1,874	15,642	71,375
	<b>Total King Country Claimant costs</b>	<b>1,874</b>	<b>31,297</b>	<b>240,953</b>
<b>Central North Island</b>				
102,305	Haparangi A4	–	–	–
438,185	Horohoro Crown Forest Claims Committee	–	–	–
171,881	Lake Taupo Forest Trust	–	–	–
214,088	Nga Kaihautu o Te Arawa Structure	214,088	–	–
35,000	Ngati Rangitihi	–	–	–
124,959	Ngati Tuara/Kearoa	–	–	–
278,793	Ngati Tuwharetoa	278,793	–	–
447,438	Ngati Whare Iwi Claims	64,479	–	–
110,938	Rotomahana Parekarangi 6N2B & 6O2B Trusts	–	–	–
6,023	Te Runanga o Ngati Tahu	–	–	–
2,563,501	Te Runanganui o Te Ikawhenua	–	–	–
200,000	Te Whakarewarewatanga o Te Ope Taua a Wahiao	–	–	–

Continued next page

These notes are to be read in conjunction with the financial statements.

# Notes to the Financial Statements

For the Year Ended 31 March 2004

Total Disbursements Since 1990		2004	2003	2002
718,959	Whakarewarewa Forest Trust	–	–	–
11,692,913	Volcanic Interior Plateau Project	1,111,373	2,600,000	3,000,000
<b>17,104,983</b>	<b>Total Direct Assistance</b>	<b>1,668,733</b>	<b>2,600,000</b>	<b>3,000,000</b>
	District Research Costs	712,894	6,388	–
	District Facilitation Costs	825,877	65,546	453
	<b>Total Central North Island Claimant costs</b>	<b>3,207,504</b>	<b>2,671,934</b>	<b>3,000,453</b>
	<b>Urewera</b>			
845,919	Nga Rauru o Nga Potiki	97,869	366,500	381,550
8,940	Ngati Kauhunguni ki Waikeremoana	–	8,940	–
10,000	Ngati Rangitahi Manawhenua Project	10,000	–	–
132,929	Te Runanga o Ngati Manawa	118,829	14,100	–
211,250	Panekiri Tribal Trust Board	59,250	85,000	67,000
50,000	Te Kahungunu Collective	50,000	–	–
8,500	Te Rangiratanga o Ngati Rangitahi	8,500	–	–
21,750	Te Whanau o Kai Trust	21,750	–	–
683,399	Tuhoe Waikaremoana Maori Trust Board	138,000	116,000	132,500
<b>1,972,687</b>	<b>Total Direct Assistance</b>	<b>504,198</b>	<b>590,540</b>	<b>581,050</b>
	District Research Costs	397,703	381,977	513,326
	District Facilitation Costs	246,460	37,663	12,301
	<b>Total Urewera Claimant costs</b>	<b>1,148,361</b>	<b>1,010,180</b>	<b>1,106,677</b>
	<b>East Coast</b>			
319,626	Ngati Porou Mt Hikurangi Lands Claim Committee	–	–	–
543,764	Te Kura Takai Puni	–	438,764	105,000
726,477	Te Runanga o Ngati Porou	–	–	–
<b>1,589,867</b>	<b>Total Direct Assistance</b>	<b>–</b>	<b>438,764</b>	<b>105,000</b>
	District Research Costs	213,073	13,141	36,901
	District Facilitation Costs	2,167	538	4,306
	<b>Total East Coast Claimant costs</b>	<b>215,240</b>	<b>681,887</b>	<b>146,207</b>

*Continued next page*

*These notes are to be read in conjunction with the financial statements.*

# Notes to the Financial Statements

For the Year Ended 31 March 2004

Total Disbursements Since 1990	2004	2003	2002
<b>Gisborne</b>			
87,018	–	–	87,018
393,792	–	–	123,950
67,144	–	–	67,144
113,344	–	12,500	100,844
537,847	–	–	92,200
203,400	203,400	–	–
73,500	–	4,500	69,000
32,500	–	–	32,500
<b>1,508,545</b>	<b>203,400</b>	<b>17,000</b>	<b>572,656</b>
District Research Costs	359	49,119	242,494
District Facilitation Costs	6,603	104,322	67,896
<b>Total Gisborne Claimant costs</b>	<b>210,362</b>	<b>170,441</b>	<b>883,046</b>
<b>Wairoa</b>			
372,101	–	–	–
44,843	–	–	42,500
382,225	–	–	–
42,500	–	–	42,500
42,500	–	–	42,500
13,460	–	13,460	–
273,300	146,300	127,000	–
42,500	–	–	42,500
<b>1,213,429</b>	<b>146,300</b>	<b>140,460</b>	<b>170,000</b>
District Research Costs	161,774	103,469	19,776
District Facilitation Costs	24,443	18,419	8,022
<b>Total Wairoa Claimant costs</b>	<b>332,517</b>	<b>262,348</b>	<b>197,798</b>

*Continued next page*

*These notes are to be read in conjunction with the financial statements.*



# Notes to the Financial Statements

For the Year Ended 31 March 2004

Total Disbursements Since 1990		2004	2003	2002
<b>Mohaka ki Ahuriri</b>				
1,012,923	Maungaharuru Tangitu Society Inc.	–	–	–
269,100	Nga Hapu o Te Ahuriri	–	–	–
1,075,171	Ngati Pahauwera	–	–	–
43,148	Te Whanganui a Orotu	–	–	–
<b>2,400,342</b>	<b>Total Direct Assistance</b>	<b>–</b>	<b>–</b>	<b>–</b>
	District Facilitation Costs	3,026	674	23,848
	<b>Total Mohaka ki Ahuriri Claimant costs</b>	<b>3,026</b>	<b>674</b>	<b>23,848</b>
<b>Southern Hawkes Bay</b>				
129,743	Nga Tukemata o Ruahine	–	–	–
<b>129,743</b>	<b>Total Direct Assistance</b>	<b>–</b>	<b>–</b>	<b>–</b>
<b>Taranaki</b>				
313,292	Nga Iwi o Taranaki/Ngati Maru	–	–	–
<b>313,292</b>	<b>Total Direct Assistance</b>	<b>–</b>	<b>–</b>	<b>–</b>
<b>Whanganui</b>				
51,476	Ngati Rakeipoho/Hikairo	–	–	–
111,250	Ngati Rangī Trust	75,625	35,625	–
92,125	Southern Whanganui Cluster	56,500	35,625	–
681,370	Te Runanga o Ngati Apa	295,988	–	–
111,250	Whanganui Central Claims Charitable Trust	63,750	47,500	–
111,250	Whanganui Northern Cluster	87,500	23,750	–
805,067	Whanganui River Maori Trust Board	–	–	70,000
<b>1,963,788</b>	<b>Total Direct Assistance</b>	<b>579,363</b>	<b>142,500</b>	<b>70,000</b>
	District Research Costs	225,390	241,156	44,032
	District Facilitation Costs	8,639	24,122	9,788
	<b>Total Whanganui Claimant costs</b>	<b>813,392</b>	<b>407,778</b>	<b>123,820</b>

Continued next page

These notes are to be read in conjunction with the financial statements.

# Notes to the Financial Statements

For the Year Ended 31 March 2004

Total Disbursements Since 1990		2004	2003	2002
<b>Rangitikei / Manawatu</b>				
52,452	Ngati Tamarangi	–	–	–
717,542	Tanenuiarangi Manawatu Incorporated	–	11,496	23,360
40,000	Te Runanga o Mua Upoko	–	–	–
425,698	Te Runanga o Raukawa	–	–	–
<b>1,235,692</b>	<b>Total Direct Assistance</b>	<b>–</b>	<b>11,496</b>	<b>23,360</b>
	District Facilitation Costs	–	–	4,470
	<b>Total Rangitikei/Manawatu Claimant costs</b>	<b>–</b>	<b>–</b>	<b>27,830</b>
<b>Wairarapa</b>				
325,900	Nga Hapu Karanga o Wairarapa	134,000	64,000	64,000
779,197	Ngai Tumapuhia a Rangi Claims Committee	–	–	–
120,000	Ngati Hinewaka	55,000	32,500	32,500
4,250	Ngati Te Hore	–	–	4,250
8,500	Owahanga Roopu	–	–	8,500
295,250	Rangitane o Tamaki Nui a Rua	126,500	164,500	4,250
21,000	Te Roopu Whanau Ngai Tumpuhia	21,000	–	–
456,613	Te Runanga o Rangitane o Wairarapa	120,000	99,000	111,500
<b>2,004,219</b>	<b>Total Direct Assistance</b>	<b>456,500</b>	<b>360,000</b>	<b>225,000</b>
	District Research Costs	37,269	442,246	327,177
	District Facilitation Costs	14,575	2,769	26,695
	<b>Total Wairarapa Claimant costs</b>	<b>508,344</b>	<b>805,015</b>	<b>579,177</b>

Continued next page

These notes are to be read in conjunction with the financial statements.

# Notes to the Financial Statements

For the Year Ended 31 March 2004

Total Disbursements Since 1990		2004	2003	2002
<b>Te Tau Ihu</b>				
664,216	Ngati Apa ki Te Waipounamu Trust	144,000	40,000	50,000
594,399	Ngati Koata no Rangitoto ki Te Tonga Trust	95,000	50,000	50,000
613,813	Ngati Kuia Trust Claim Committee	94,750	57,750	90,000
854,097	Ngati Rarua Trust	105,000	40,000	188,106
587,974	Ngati Tama Manawhenua ki Te Tau Ihu Trust	95,000	130,000	91,773
902,608	Te Atiawa Manawhenua ki Te Tau Ihu Trust	123,000	109,500	250,264
639,176	Te Runanga o Toa Rangitira Incorporated	220,000	15,000	50,000
585,786	Te Runanga o Rangitane o Wairau	141,750	90,000	50,000
52,500	Wakatu Incorporated	52,500	–	–
<b>5,494,569</b>	<b>Total Direct Assistance</b>	<b>1,071,000</b>	<b>532,250</b>	<b>820,143</b>
	District Research Costs	124,694	118,394	75,703
	District Facilitation Costs	9,762	28,034	51,356
	<b>Total Te Tau Ihu Claimant costs</b>	<b>1,205,456</b>	<b>678,676</b>	<b>947,202</b>
<b>Southern South Island</b>				
1,149,337	Ngai Tahu Maori Trust Board	–	–	–
<b>1,149,337</b>	<b>Total Direct Assistance</b>	<b>–</b>	<b>–</b>	<b>–</b>
<b>60,007,258</b>	<b>TOTAL DIRECT ASSISTANCE TO CLAIMANTS</b>	<b>4,959,494</b>	<b>5,540,296</b>	<b>7,065,461</b>
	Total District Research Costs	1,912,707	1,704,477	1,703,938
	Total District Facilitation Costs	1,407,710	878,774	331,291
	<b>TOTAL SERVICES TO CLAIMANTS</b>	<b>8,279,911</b>	<b>8,123,547</b>	<b>9,100,690</b>

*These notes are to be read in conjunction with the financial statements.*

## Forest Rental Proceeds

DISTRICT/FOREST	Forest No.	Current Year Received	Total Held in Trust
<b>Northland</b>			
Aupouri	1	557,670	7,458,158
Otangaroa	2	177,589	1,794,012
Waitangi	3	100,800	1,148,955
Glenbervie	4	443,100	5,319,681
<b>Auckland</b>			
Mangawhai	6	67,068	838,996
Woodhill	7	1,026,054	15,307,502
Riverhead	8	600,994	6,768,698
Maramarua	11	736,360	7,693,257
Whangapoua	12	344,610	4,290,624
Kauaeranga	13	17,000	186,992
Waihou	14	122,600	1,189,305
Tairua	15	925,486	9,451,134
Athenree	16	161,800	1,574,328
<b>Central North Island</b>			
Rotoehu	17	637,194	14,754,678
Horohero	18	53,501	1,121,423
Whakarewarewa	19	649,779	7,375,081
Crater	20	62,659	1,189,527
Kaingaroa	21	6,897,318	157,242,887
Waimihia	22	763,476	18,198,689
Marotiri	23	8,194	229,749
Pirongia	24	23,688	223,167
Tawarau	25	102,648	1,030,137
Mangaokewa	26	59,325	592,197
Pureora	27	107,901	1,204,909
Waituhi	28	42,511	453,180
Taurewa	29	52,290	530,628
<b>East Coast</b>			
Ruatoria	32	380,485	4,076,301
Tokomaru	33	369,495	3,677,757
Mangatu	34	532,315	5,292,309
Wharerata	35	512,222	5,130,600
Patunamu	36	291,383	2,744,855

*Continued next page*

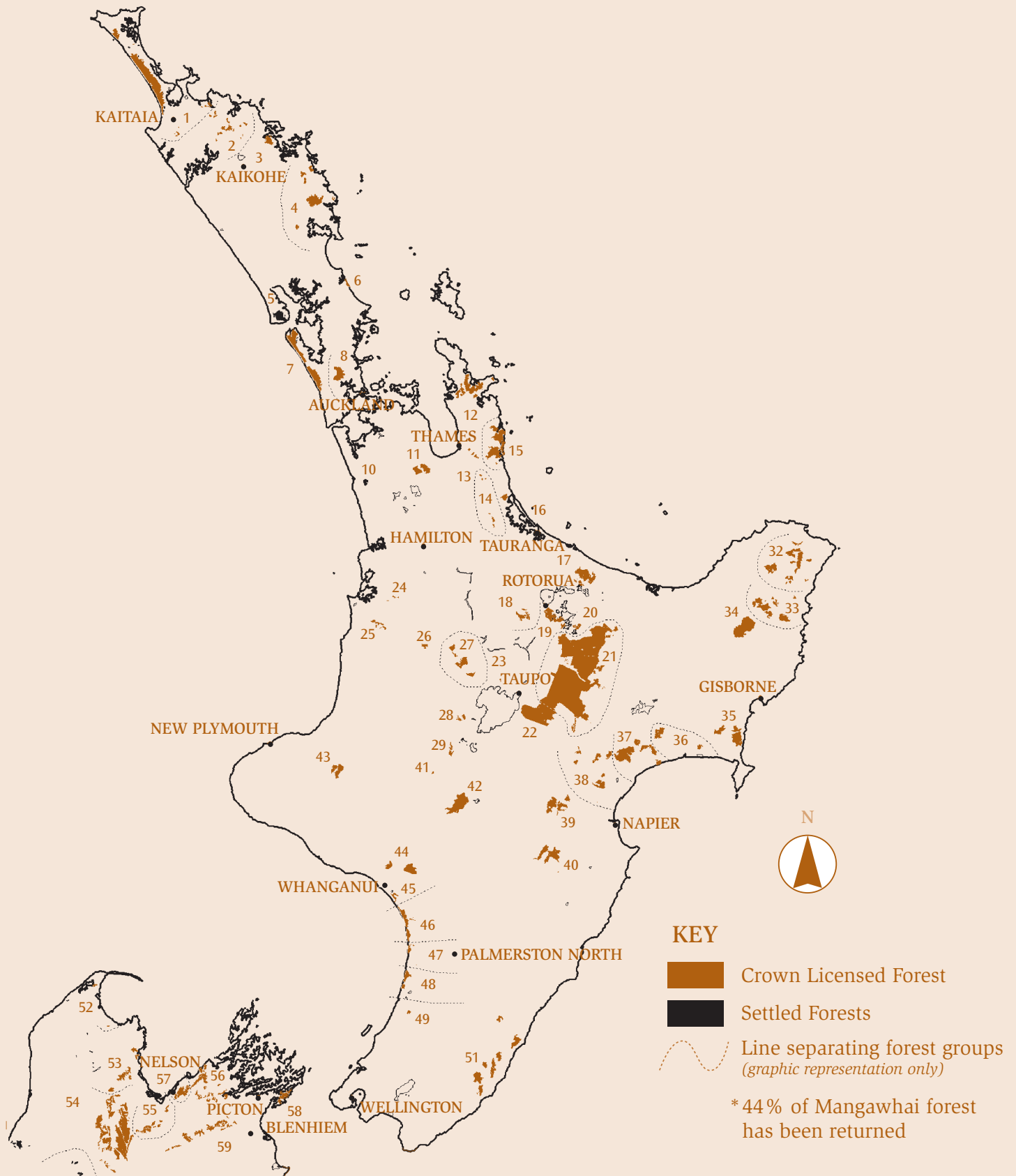
*These notes are to be read in conjunction with the financial statements.*

## Forest Rental Proceeds

DISTRICT/FOREST	Forest No.	Current Year Received	Total Held in Trust
<b>Hawkes Bay</b>			
Mohaka	37	869,392	9,801,694
Esk	38	434,257	4,867,836
Kaweka	39	285,429	3,256,852
Gwavas	40	350,858	4,466,541
<b>Southern North Island</b>			
Erua	41	3,710	38,034
Karioi	42	447,461	5,678,806
Te Wera	43	118,370	1,222,056
Lismore Hill	44	242,900	2,612,577
Lismore Sand	45	84,976	1,010,222
Santoft	46	205,607	3,082,967
Tangimoana	47	31,101	484,966
Waitarere	48	153,650	1,627,821
Manakau	49	21,000	214,017
Ngaumu	51	735,220	6,864,615
<b>Nelson</b>			
Golden Bay	52	9,940	130,991
Motueka	53	167,685	1,669,405
Golden Downs East	54	874,000	10,868,930
Golden Downs West	54	949,500	11,568,330
Waimea	55	175,001	2,209,724
Rai	56	398,900	4,941,187
Hira	57	230,000	2,822,853
Queen Charlotte	58	55,474	606,411
Wairau	59	387,500	4,857,086
<b>TOTAL CAPITAL RECEIPTS</b>		<b>24,059,446</b>	<b>372,993,637</b>

*These notes are to be read in conjunction with the financial statements.*

# Map – Forest Rental Proceeds



# Auditors Report



## AUDIT REPORT

To the Readers of the financial report of Crown Forestry Rental Trust.

We have audited the attached financial report on pages 12 to 35. The financial report provides information about the past financial performance of Crown Forestry Rental Trust and its financial position as at 31 March 2004. This information is stated in accordance with the accounting policies as attached.

## TRUSTEES' RESPONSIBILITIES

The Trustees are responsible for the preparation of a financial report which gives a true and fair view of the financial position of Crown Forestry Rental Trust as at 31 March 2004, and of the results of their operations and cash flows for the year ended 31 March 2004.

## AUDITORS' RESPONSIBILITIES

It is our responsibility to express an independent opinion on the financial report presented by the Trustees and report our opinion to you.

## BASIS OF OPINION

An audit includes examining, on a test basis, evidence relevant to the amounts and disclosures in the financial report. It also includes assessing:

- the significant estimates and judgements made by the Trustees in the preparation of the financial report, and
- whether the accounting policies are appropriate to the Crown Forestry Rental Trust circumstances, consistently applied and adequately disclosed.

We conducted our audit in accordance with generally accepted auditing standards in New Zealand. We planned and performed our audit so as to obtain all the information and explanations which we considered necessary. We obtained sufficient evidence to give reasonable assurance that the financial report is free from material misstatements, whether caused by fraud or error. In forming our opinion, we also evaluated the overall adequacy of the presentation of information in the financial report.

Our firm carries out other assignments for the Trust in the area of taxation advice. Neither our firm nor our employees have any other interests in the Trust.

## UNQUALIFIED OPINION

We have obtained all the information and explanations we have required.

In our opinion:

- proper accounting records have been kept by Crown Forestry Rental Trust as far as appears from our examination of those records; and
- the financial report on pages 12 to 35:
  - complies with generally accepted accounting practice;
  - gives a true and fair view of the financial position of Crown Forestry Rental Trust as at 31 March 2004, and the results of their operations and cash flows for the year ended on that date.

Our audit was completed on 18/5/04 and our unqualified opinion is expressed as at that date.

A handwritten signature in brown ink that reads "Horwath Wellington Audit".

HORWATH WELLINGTON AUDIT  
Chartered Accountants  
Wellington











## *Directory* as at 30 June 2004

### TRUSTEES

Sir Graham Latimer *Chairman*  
Gregory Fortuin  
Angela Foulkes  
Paul Morgan  
Kingi Smiler  
Maryan Street

### APPOINTED BY

Maori Appointor  
Crown Appointor  
Crown Appointor  
Maori Appointor  
Maori Appointor  
Crown Appointor

### SENIOR MANAGEMENT

Ben Dalton  
Janet Dobbie  
Jacqui Ngapera  
Dion Tuuta  
Vincent O'Malley

Acting Chief Executive  
Corporate Services Manager  
Acting Operations Manager  
Acting Policy Development Manager  
Research Manager

### CROWN FORESTRY RENTAL TRUST

Level 2 Vogel Building  
8 Aitken St  
PO Box 2219  
Wellington  
New Zealand

Telephone: 04 915 1500  
Facsimile: 04 916 7806  
Email: [contact@cfrt.org.nz](mailto:contact@cfrt.org.nz)  
Website: [www.cfrt.org.nz](http://www.cfrt.org.nz)

